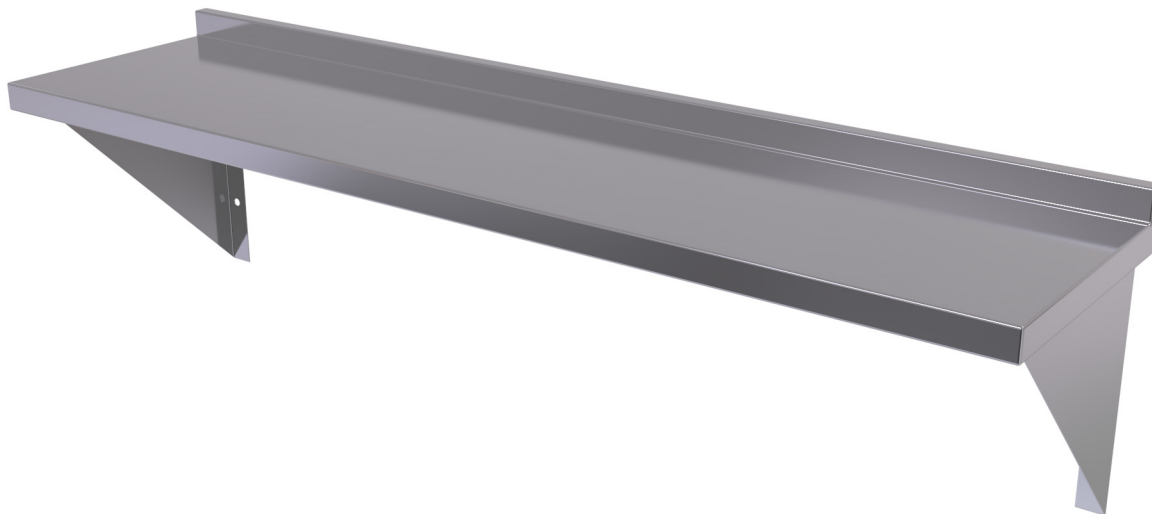


# Shelf

Flat



The Simcraft Flat Shelf is hand-crafted from 1.2mm thick 304 grade stainless steel. The shelves manufactured to 4 standard sizes, however custom size can be manufactured on request. Each shelf is 300mm wide and supplied with stainless steel wall brackets. A cost effective storage solution idea for canteens, commercial kitchens and restaurants

## Design Features

- 1.2mm 304 grade S.S. satin finish
- S.S. 'C-Channel' support
- 4 standard sizes or custom size
- Supplied with S.S. wall brackets
- Safety edge
- Small rear upstand

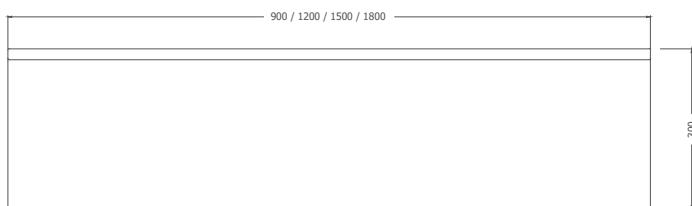
### Sample Spec

SIMCRAFT Products S.S. Flat Shelf - [900/1200/1500/1800L](#) x 300W with 'C-Channel' support and wall brackets

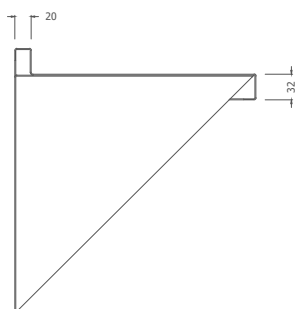
# Options

**Size:** 4 standard lengths or custom sizes available

## Plan



## Section



## Front Elevation



# Standard Sizes



## How to order

BCSFS . 1800

A B

Flat Shelf,  
1800mm Long

## Order Key

A = Product Code

B = Shelf Length (mm)

900  
1200  
1500  
1800

[www.simcraftproducts.com.au](http://www.simcraftproducts.com.au)

(08) 9258 3033

[quotes@simcraftproducts.com.au](mailto:quotes@simcraftproducts.com.au)

**Simcraft Products**

7 Hantke Place,  
Welshpool WA 6016



**SIMCRAFT**

Details are subject to change without notice. Please refer to [simcraftproducts.com.au](http://simcraftproducts.com.au) for the most current information. Allow +/- 5mm tolerance for dimensions

