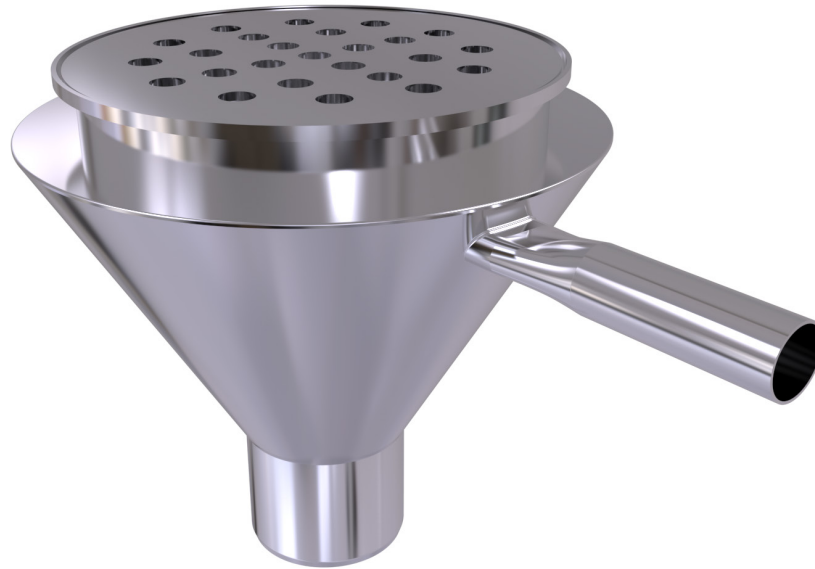


Flushing Rim

Floor



The Simcraft Floor Flushing Rim is a conical waste removal unit fabricated from 316 grade stainless steel. The unit is designed to be set into the floor to facilitate immediate and hygienic removal of waste from the surrounding area. The unit is connected to a flush valve, and when flushed the unit's folded upper lip effectively distributes the flushed water around the top of the cone, from which point the water runs down and flushes all waste from the unit. The unit comes with a 110mm outlet as standard for effective removal of both liquid and solid waste. Adjustable S.S. 110mm P-trap can be provided. Suitable for use in hospitals, aged care centres, laboratories and medical facilities.

Design Features

- WaterMark certified
- 1.6mm 316 grade S.S. No. 4 satin finish
- 40mm inlet and 110mm S.S. dropper outlet
- Concrete floor, vinyl floor or transportable building versions
- 5mm heavy duty removable grate
- Smooth contoured bowl for efficient flushing and easy cleaning
- Standard sizes
- S.S. P-trap available

Sample Spec

SIMCRAFT Products S.S. Floor Style Flushing Rim - [Concrete/vinyl/transportable](#) floor style with 40mm inlet, 110mm [with adjustable P-trap](#) outlet and 5mm heavy duty removable grate.

Options

Size: standard

Version: concrete, vinyl floor or transportable

Optional P-trap: 110mm S.S. adjustable P-trap

Standard Sizes



Ø306mm

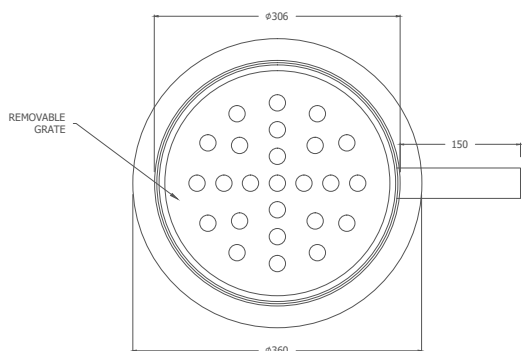


Ø356mm

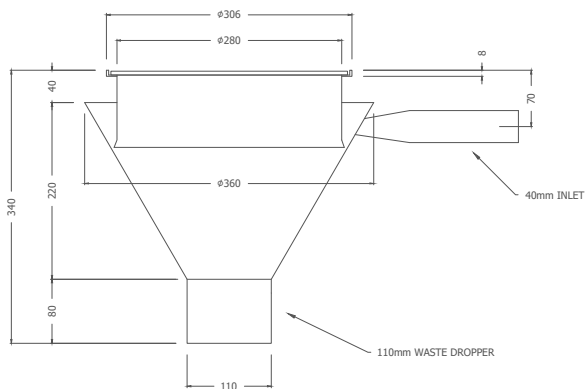


Ø356mm

Plan



Section



How to order

FFR . FS

A B

Floor Flushing Rim, Concrete Floor Style

Order Key

A = Product Code

B = Version

FS - Concrete Floor

FMV - Vinyl Floor

FMT - Transportable

www.simcraftproducts.com.au

(08) 9258 3033

quotes@simcraftproducts.com.au

Simcraft Products

7 Hantke Place,
Welshpool WA 6016



SIMCRAFT

Details are subject to change without notice. Please refer to simcraftproducts.com.au for the most current information. Allow +/- 5mm tolerance for dimensions

Certified System

Quality
ISO 9001