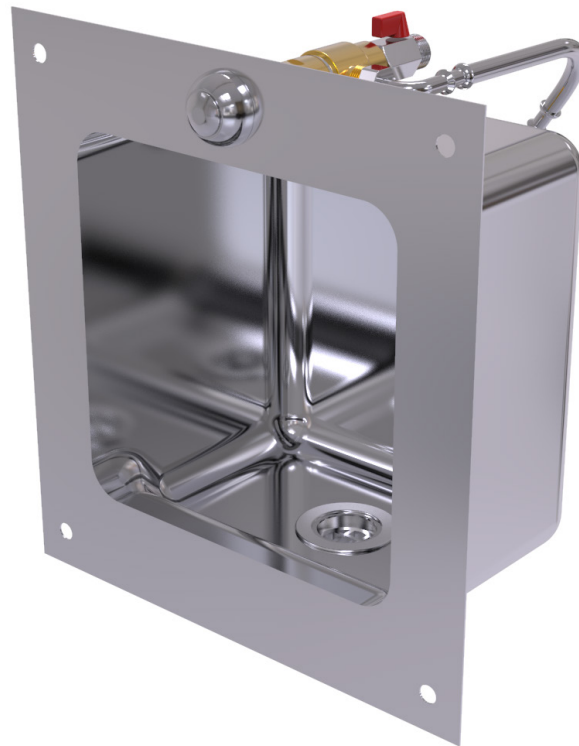


Basin

Recessed Security



The Simcraft Recessed Security Basin is a compact, durable and stylish unit that is ideal for applications requiring security and vandal resistance where space is at a premium, such as high-traffic public thoroughfare areas or smaller prison or holding cells. The unit is fabricated from 304 grade stainless steel, and is designed with no visible or accessible fixings or other tie-off points to minimise the risk of vandalism, ligature/suicide and contraband concealment. Supplied pre-plumbed with prison safe tapware.

Design Features

- Vandal, suicide and contraband resistant
- 1.2mm 304 grade S.S. No. 4 satin finish
- Designed for detention centres
- Wall fixings have zero tie off or anchor points
- Supplied pre-plumbed with timeflow push button & valve
- 40mm anti-ligature waste

Sample Spec

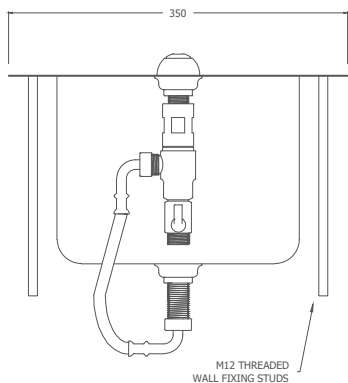
SIMCRAFT Products S.S. Recessed Security Basin - 350W x 375H x 195D with rear fixing rods and security timeflow push button & valve and 40mm anti-ligature waste

Options

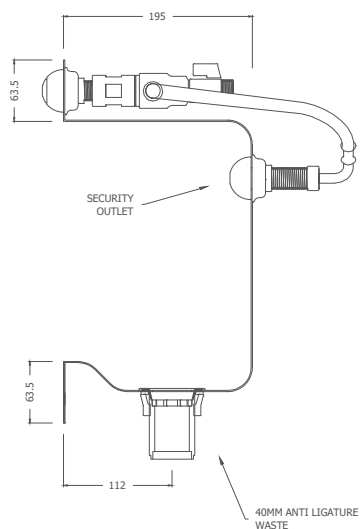
Size: standard or custom size

Optional Standard Waste: downgrade to standard 40mm waste for public area usage

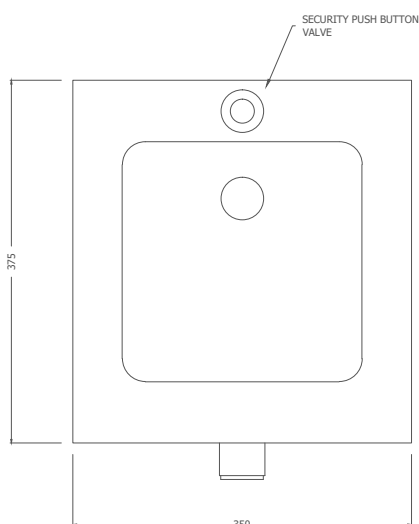
Plan



Section



Front Elevation



Standard Sizes

350W
x
375H
x
195D

How to order

RHB

A

Recessed Security Basin

Order Key

A = Product Code

www.simcraftproducts.com.au

(08) 9258 3033

quotes@simcraftproducts.com.au

Simcraft Products

7 Hantke Place,
Welshpool WA 6016



SIMCRAFT

Details are subject to change without notice. Please refer to simcraftproducts.com.au for the most current information. Allow +/- 5mm tolerance for dimensions

Certified System

Quality
ISO 9001