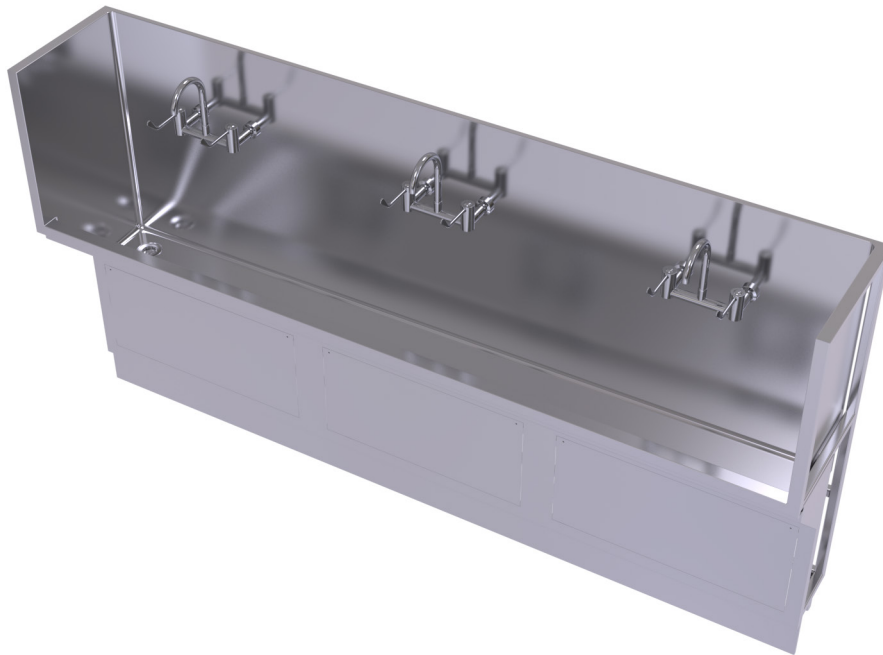


Trough

Scrub-Up



The Simcraft Scrub-Up Trough has been designed specifically for use in applications where more thorough scrub-up procedures are required. The trough is crafted from 1.2mm thick 304 grade stainless (316 acid-resistant grade option), and its two piece design, with internal HMR board reinforcement, ensures additional strength and durability. It comes as standard with an increased trough depth of 330mm as well as high splashback at the rear and sides (if required) to contain more vigorous ablutions, as well as a 50mm plug and waste (acid-resistant waste option available). This trough can be supplied with heavy duty brackets to be wall hung, or can also be specified to be mounted on a custom frame with removable stainless steel access panels to maintain ease of cleaning across the whole unit. This product is Simcraft's premium offering for heavy duty wash-up requirements, and as such is ideal for applications including surgical or medical facilities, laboratories and food preparation areas.

Design Features

- Fully welded internal surface for hygienic finish
- Radius internal corners for easy cleaning
- 1.2mm 304 grade S.S. No. 4 satin finish
- Supplied with wall brackets & 50mm waste
- Internal HMR board reinforcement
- Left or right hand waste position
- Available in a range of standard sizes
- Custom lengths made to order
- Fully enclosed free standing version
- Pre-plumbed tapware available

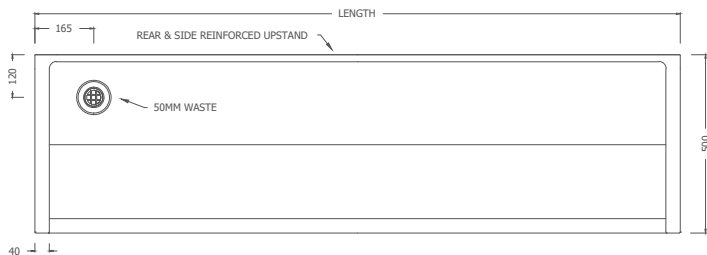
Sample Spec

SIMCRAFT Products S.S. Scrub-up Trough - XXXXL x 470W with 600mm reinforced splashback to rear and sides. Supplied with wall brackets/free standing frame and left/right hand 50mm waste outlet.

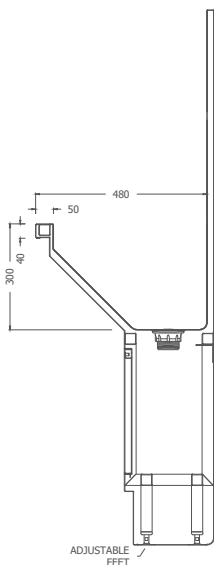
Options

- Size:** 4 standard sizes or custom-made
- Outlet position:** left or right hand
- Version:** wall hung or free standing
- Grade:** standard 304 or acid resistant 316
- Upstand:** 600mm boxed or custom size
- Optional Tapware:** pre-plumbed tapware or tap holes available

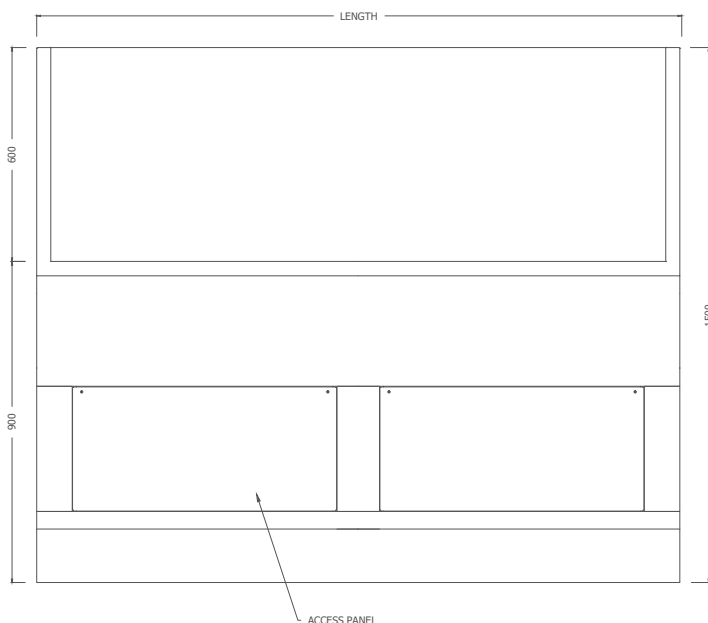
Plan



Section



Front Elevation



Standard Sizes

2 Person	3 Persons	4 Persons	5 Persons
1200	1800	2400	3000

How to order

SUT . 1800 . WB . RO . RH

A B C D E

Scrub-up Trough, 1800mm Long, Wall Brackets, Rear Upstand, Right Hand Waste

Order Key

- | | |
|-------------------------------|----------------------------------|
| A = Product Code | D = Uprand Options |
| B = Trough Length (mm) | RO: Rear Only |
| C = Version | RE: Rear and Both Ends |
| WB: Wall Brackets | RL: Rear and Left End |
| FR: Free Standing | RR: Rear and Right End |
| | E = Waste Outlet Position |
| | LH: Left Hand Waste |
| | RH: Right Hand Waste |

Suggested Tap and Trough Combination

1200mm = 2 taps	2400mm = 4 taps
1800mm = 3 taps	3000mm = 5 taps

www.simcraftproducts.com.au

(08) 9258 3033

quotes@simcraftproducts.com.au

Simcraft Products

7 Hantke Place,
Welshpool WA 6016



SIMCRAFT

Details are subject to change without notice. Please refer to simcraftproducts.com.au for the most current information. Allow +/- 5mm tolerance for dimensions