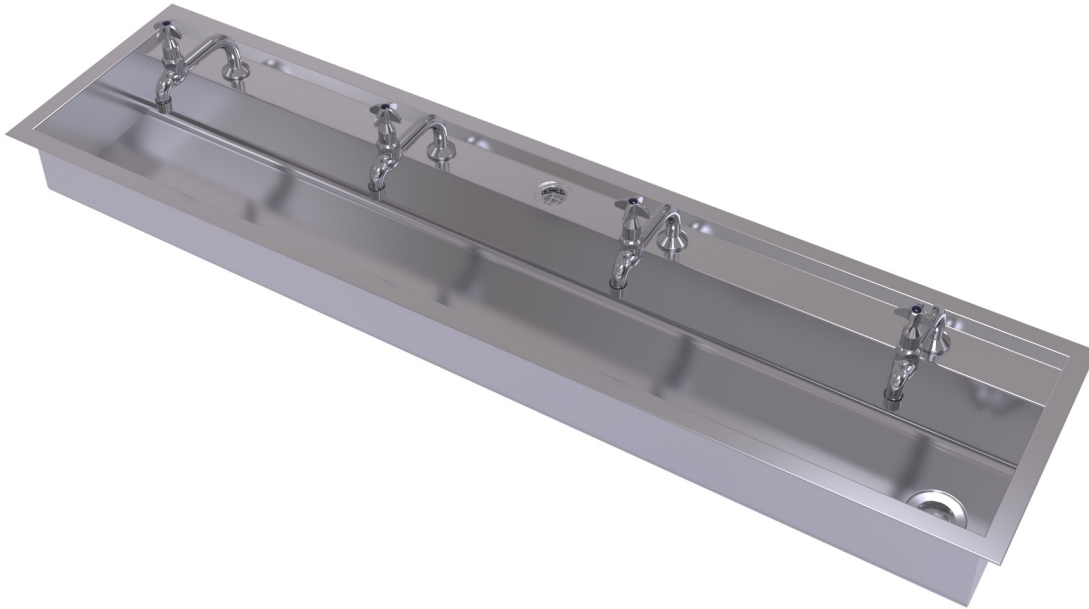


Trough

Activity



The Simcraft Activity Trough is a versatile trough designed primarily to be inset into a benchtop. It is fabricated from single piece 1.2mm thick 304 grade stainless steel (acid-resistant 316 grade option also available). It features an enlarged rear landing incorporating a rear hob suitable for mounting of tapware whilst still maintaining a wet edge to aid water containment. The trough is fitted as standard with an overflow drain on the rear hob to prevent flooding, and can also be pre-plumbed with suitable tapware. With the ability to be mounted into existing benchtops, this trough is ideal for washup areas in classrooms and laboratories. Comes complete with stainless steel plug and waste (316 grade fittings also available).

Design Features

- Radius internal corners for easy cleaning
- 1.2mm 304 grade S.S. No. 4 satin finish
- Supplied with inset clips & 50mm waste
- Extended rear hob for tapware mounting
- Conceals pipework
- Left or right hand waste position
- Available in a range of standard sizes
- Custom lengths made to order
- Pre-plumbed tapware available

Sample Spec

SIMCRAFT Products S.S. Activity Trough - XXXXLx 450W x 160D with inset clips and left/right hand 50mm waste outlet.

Options

Size: 3 standard sizes or custom-made

Outlet position: left or right hand

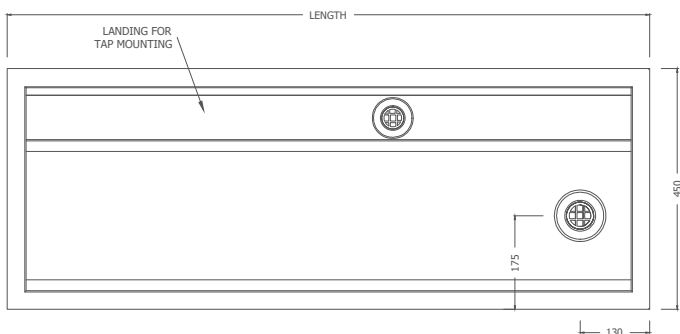
Optional Tapware: pre-plumbed tapware or tap holes available

Standard Sizes

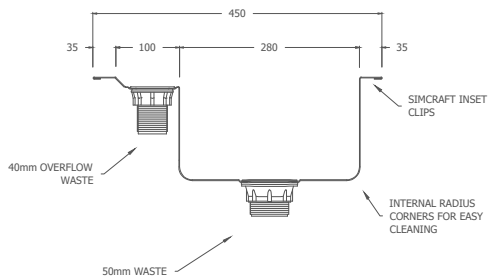
- 1200
- 1500
- 1800



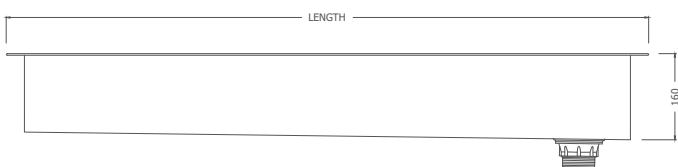
Plan



Section A



Front Elevation



How to order

ACT . 1800 . RH
A B C

Activity Trough, 1800mm Long,
Right Hand Waste Outlet

Order Key

- A = Product Code
- B = Trough Length (mm)
- C = Waste Outlet Position
LH: Left Hand Waste
RH: Right Hand Waste

www.simcraftproducts.com.au

(08) 9258 3033

quotes@simcraftproducts.com.au

Simcraft Products

7 Hantke Place,
Welshpool WA 6016



SIMCRAFT

Details are subject to change without notice. Please refer to simcraftproducts.com.au for the most current information. Allow +/- 5mm tolerance for dimensions



Quality
ISO 9001