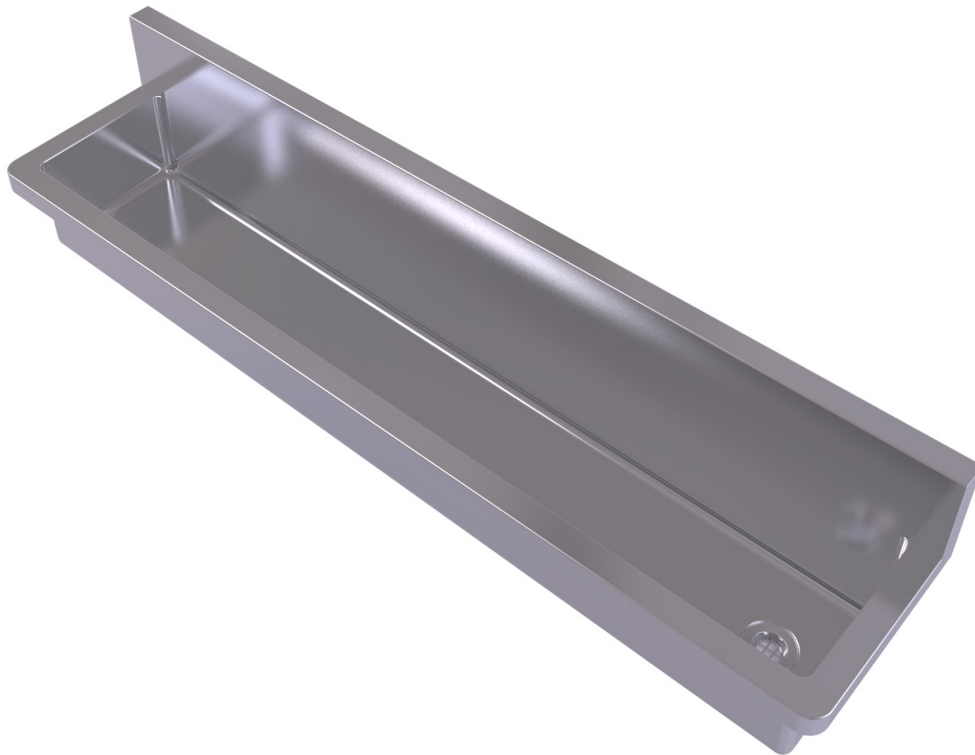


# Trough

Evolution



The Simcraft Evolution Trough is a versatile wall-mounted unit crafted from 1.2mm thick 304 grade stainless steel. Features a 150mm boxed upstand for mounting tapware whilst concealing plumbing without the need to run pipes through walls. Internal radius corners allow for ease of cleaning, whilst the rounded external corners and folded wet edges provide a safe exterior, making it ideal for daycare centres, schools, colleges or any high-traffic area. Includes 50mm stainless steel plug and waste and heavy duty wall-mounting brackets, and is also available with pre-plumbed tapware.

## Design Features

- External radius safety corners
- 1.2mm 304 grade S.S. No. 4 satin finish
- Radius internal corners for easy cleaning
- Supplied with wall brackets & 50mm waste
- 150mm boxed upstand to conceal pipework
- Left or right hand waste position
- Available in a range of standard sizes
- Custom lengths made to order
- Free standing version
- Pre-plumbed tapware available

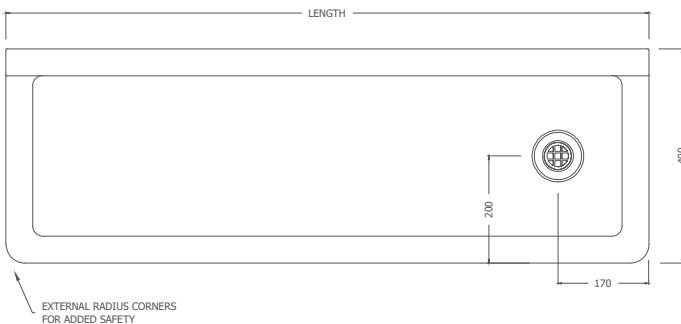
### Sample Spec

SIMCRAFT Products S.S. Evolution Trough - XXXXL x 400W x 200D with [wall brackets/free standing](#) and [left/right](#) hand 50mm waste outlet.

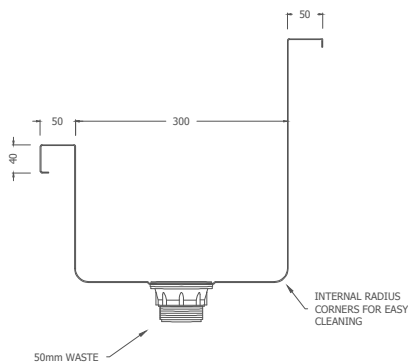
# Options

- Size:** 8 standard sizes or custom-made
- Outlet position:** left or right hand
- Version:** wall hung or free standing
- Upstand:** 150mm boxed or custom size
- Optional Tapware:** pre-plumbed tapware or tap holes available

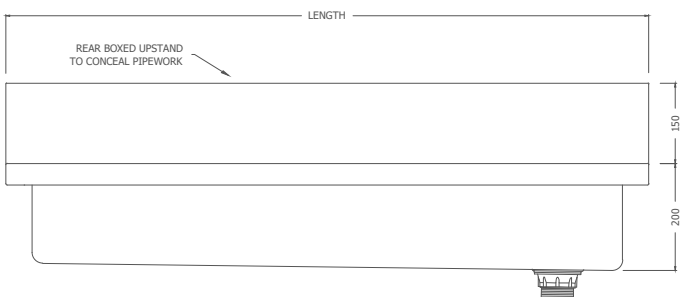
## Plan



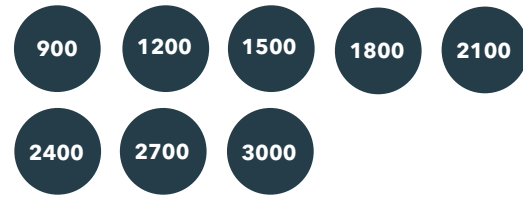
## Section A



## Front Elevation



# Standard Sizes



## How to order

EVT . 1800 . WB . RH  
A B C D

Evolution Trough, 1800mm Long, Wall Brackets, Right Hand Waste Outlet

## Order Key

- A** = Product Code
- B** = Trough Length (mm)
- C** = Version
- D** = Waste Outlet Position
- E** = Upstand Size (if custom)
- LH: Left Hand Waste
- RH: Right Hand Waste
- WB: Wall Brackets
- FR: Free Standing

[www.simcraftproducts.com.au](http://www.simcraftproducts.com.au)

(08) 9258 3033

[quotes@simcraftproducts.com.au](mailto:quotes@simcraftproducts.com.au)

**Simcraft Products**

7 Hantke Place,  
Welshpool WA 6016



**SIMCRAFT**

Details are subject to change without notice. Please refer to [simcraftproducts.com.au](http://simcraftproducts.com.au) for the most current information. Allow +/- 5mm tolerance for dimensions