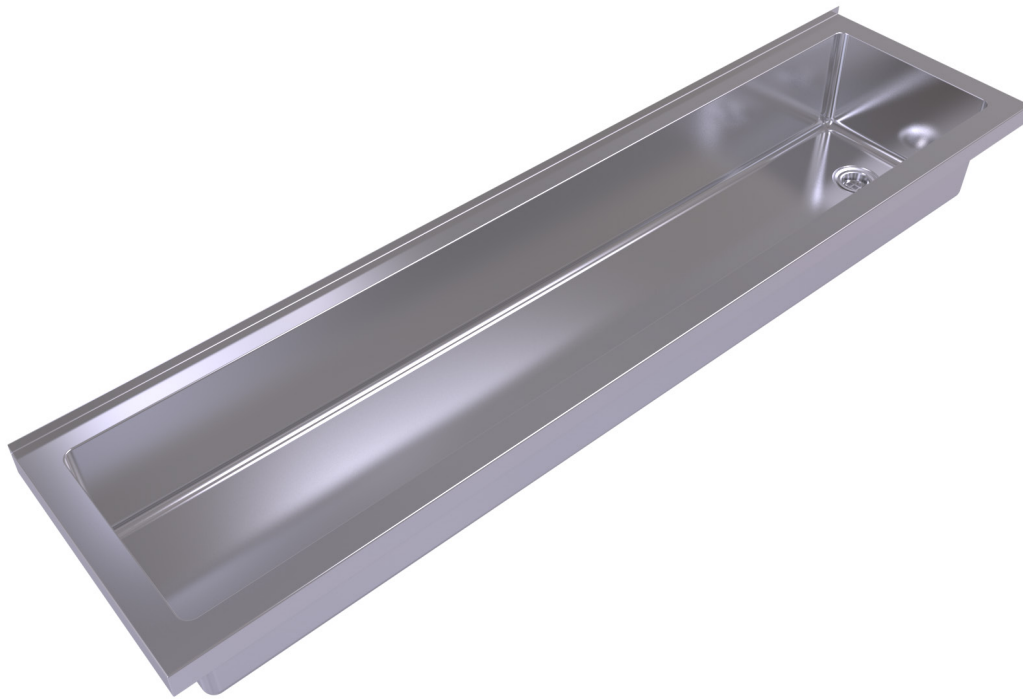


# Trough

Practical



Fabricated from durable 1.2mm 304 grade stainless steel, the Simcraft Practical Trough is an excellent all-round option for a range of applications including classrooms and commercial kitchens. It features as standard a 50mm rear hob with tile lip, and can also be provided with a 100mm rear hob for mounting tapware or a larger splashback for additional splash protection on the surrounding area. Internal radius corners facilitate ease of cleaning. The unit is supplied with heavy duty wall brackets and 50mm stainless steel plug and waste.

## Design Features

- Radius internal corners for easy cleaning
- 1.2mm 304 grade S.S. No. 4 satin finish
- Supplied with wall brackets & 50mm waste
- Left or right hand waste position
- Tile lip to rear
- Available in a range of standard sizes
- Custom lengths made to order
- 150mm blade upstand available
- Inset & free standing versions
- Pre-plumbed tapware available
- Optional extended hob for tapware

## Sample Spec

SIMCRAFT Products S.S. Practical Trough - XXXXL x 450W x 200D with wall brackets/free standing frame/ inset clips and left/right hand 50mm waste outlet.

# Options

**Size:** 8 standard sizes or custom-made

**Outlet position:** left or right hand

**Version:** wall hung, free standing or inset

**Optional Upstand:** 150mm blade or custom size

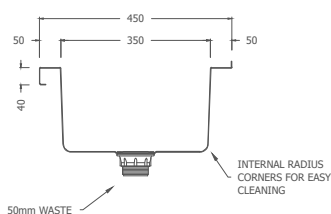
**Optional Side Tile Lip:** additional tile lips to 1 or both sides

**Optional Tapware:** pre-plumbed tapware or tap holes available

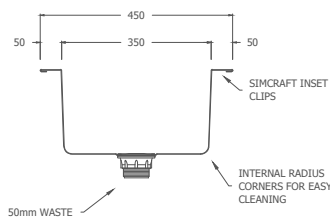
## Plan



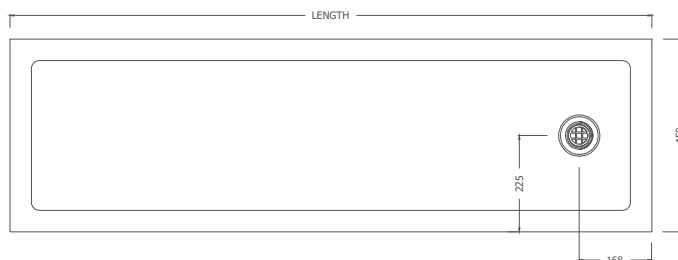
## Section



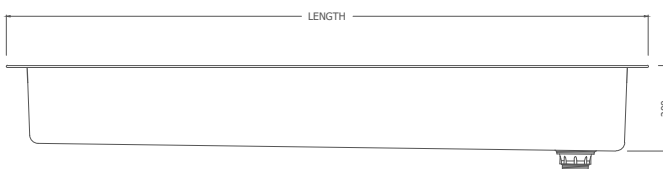
## Section - Inset Model



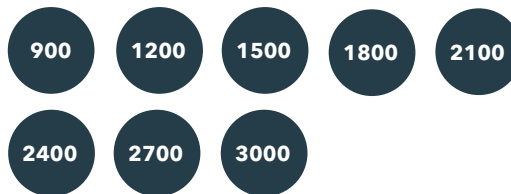
## Plan - Inset Model



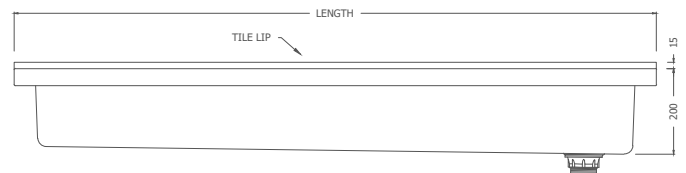
## Front Elevation - Inset Model



# Standard Sizes



## Front Elevation



## How to order

PRT . 1800 . WB . RH . 150

A B C D E

Practical Trough, 1800mm Long, Wall Brackets, Right Hand Waste Outlet, 150mm Upstand

## Order Key

**A** = Product Code

**B** = Trough Length (mm)

**C** = Version

WB: Wall Brackets

FR: Free Standing

IN: Inset

**D** = Waste Outlet Position

LH: Left Hand Waste

RH: Right Hand Waste

**E** = Upstand Size (if required)

150mm

[www.simcraftproducts.com.au](http://www.simcraftproducts.com.au)

(08) 9258 3033

[quotes@simcraftproducts.com.au](mailto:quotes@simcraftproducts.com.au)

**Simcraft Products**

7 Hantke Place,  
Welshpool WA 6016



Details are subject to change without notice. Please refer to [simcraftproducts.com.au](http://simcraftproducts.com.au) for the most current information. Allow +/- 5mm tolerance for dimensions

