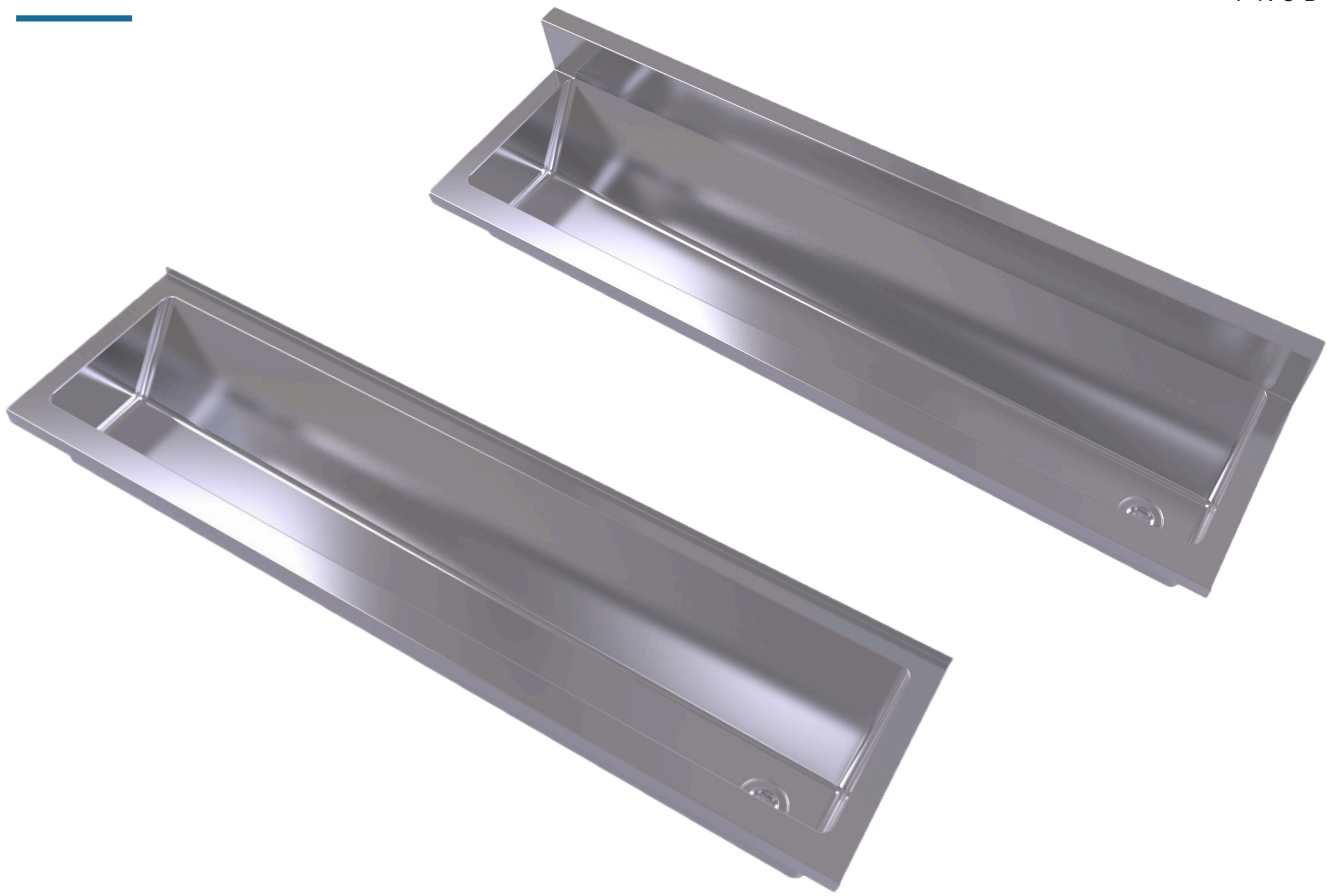


# Trough

Ablution



The Simcraft Ablution Trough is our premium hand-wash trough, crafted from 1.2mm 304 grade stainless steel and featuring internal radius corners for ease of cleaning and 50mm rear hob with tile lip or 150mm boxed upstand for mounting tapware. The trough suits wall-mounted tap configurations as the sloped rear landing and front lip return provide effective splash minimisation while allowing sufficient clearance for effective washing up of hands and arms, making it perfect for sanitation or wash-up areas. Unit is supplied with heavy duty wall brackets and 50mm stainless steel plug and waste. Can be supplied with optional fascia panels for front and sides of trough.

## Design Features

- Radius internal corners for easy cleaning
- 1.2mm 304 grade S.S. No. 4 satin finish
- Supplied with wall brackets & 50mm waste
- Left or right hand waste position
- Tile lip to rear
- Available in a range of standard sizes
- Custom lengths made to order
- 150mm boxed upstand available
- Free standing version
- Pre-plumbed tapware available

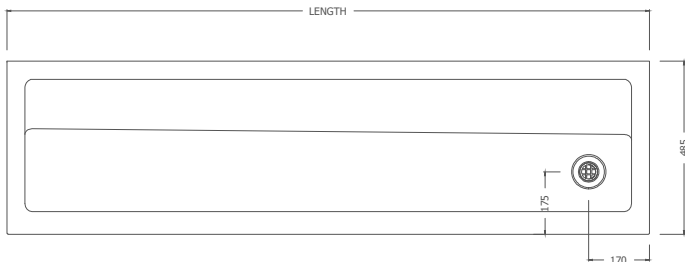
## Sample Spec

SIMCRAFT Products S.S. Ablution Trough - XXXXL x 485W x 215D with wall brackets/free standing frame and left/right hand 50mm waste outlet.

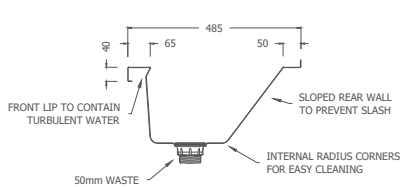
# Options

- Size:** 8 standard sizes or custom-made
- Outlet position:** left or right hand
- Version:** wall hung or free standing
- Optional Upstand:** 150mm boxed or custom size
- Optional Side Tile Lip:** additional tile lips to 1 or both sides
- Optional Tapware:** pre-plumbed tapware or tap holes available

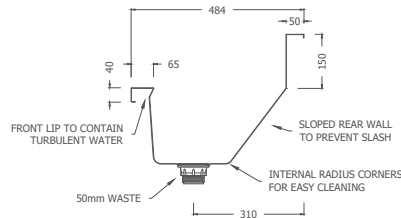
## Plan



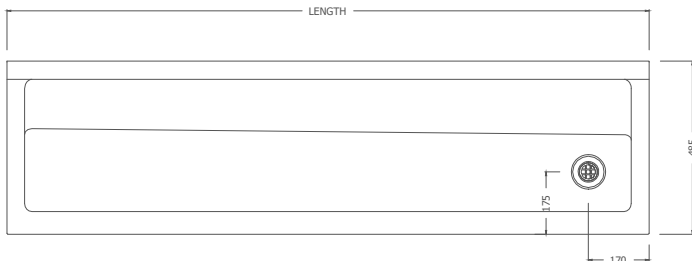
## Section



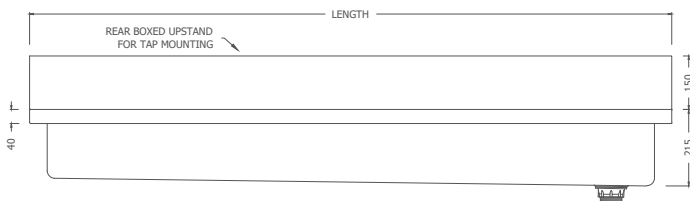
## Section - 150mm Upstand Model



## Plan - 150mm Upstand Model



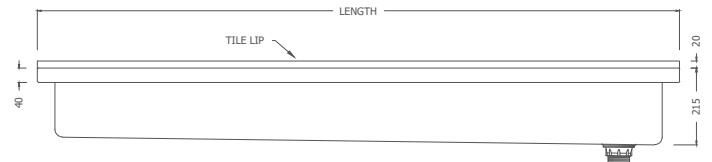
## Front Elevation - 150mm Upstand Model



# Standard Sizes



## Front Elevation



## How to order

ABT . 1800 . WB . RH . 150  
A B C D E

Ablution Trough, 1800mm Long, Wall Brackets,  
Right Hand Waste Outlet, 150mm Upstand

## Order Key

- A** = Product Code
- B** = Trough Length (mm)
- C** = Version  
WB: Wall Brackets  
FR: Free Standing
- D** = Waste Outlet Position  
LH: Left Hand Waste  
RH: Right Hand Waste
- E** = Upstand Size (if required)  
150mm

[www.simcraftproducts.com.au](http://www.simcraftproducts.com.au)

(08) 9258 3033

[quotes@simcraftproducts.com.au](mailto:quotes@simcraftproducts.com.au)

**Simcraft Products**

7 Hantke Place,  
Welshpool WA 6016



Details are subject to change without notice. Please refer to [simcraftproducts.com.au](http://simcraftproducts.com.au) for the most current information. Allow +/- 5mm tolerance for dimensions

